



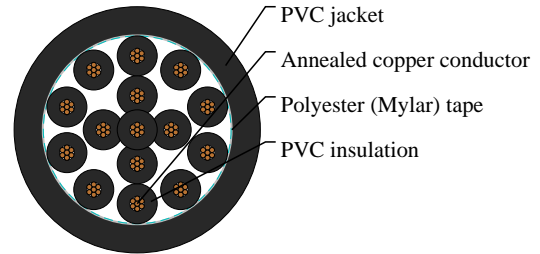
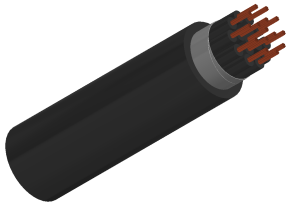
Caledonian

JIS Code Power & Control Cables

www.caledonian-cables.com

marketing@caledonian-cables.com

CVV 15C0.75



APPLICATIONS

For supervisory electrical equipment, station control circuits, outdoor, suitable installation in dry or wet cable trenches.

STANDARDS

IEC 60502-1

CABLE CONSTRUCTION

Conductor: Stranded annealed copper wires

Insulation: Polyvinyl chloride (PVC)

Filler: Non-hygroscopic material(optional)

Binding tape: Polyester (Mylar) tape (optional)

Sheath: Polyvinyl chloride (PVC), Black color (A special flame retardant sheath can be supplied)

COLOUR CODE

Black core with marking numbers

PHYSICAL AND THERMAL PROPERTIES

Maximum conductor temperature 70°C

Circuit voltage not exceeding 600 volts

Test voltage 3500 volts

DIMENSION AND PARAMETERS

No. of Cores	Nominal Cross-sectional Area	No. and Dia. of Wires	Conductor Diameter	Nominal Insulation Thickness	Nominal Sheath Thickness	Approx. Overall Diameter	Approx. Weight	Min. Insulation Resistance at 70 °C	Max. DC Resistance at 20°C
	mm ²	no./mm	mm	mm	mm	mm	kg/km	Ohm/km	Ω/km
15	0.75	7/0.37	1.11	0.8	1.8	18.5	370	0.0412	24.5